



U.S. Department of Defense

EFMP Exceptional
Family Member
Program

Important Information about EFMP for Leaders

June 2023

Agenda

- Overview of the Exceptional Family Member Program
- Standardization
- EFMP at Your Installation
- Why enroll in EFMP?
- Myth Busters
- Standard Resources for Family Support
- Command Responsibilities and Benefits
- Contact Information

Overview of the Exceptional Family Member Program

EFMP helps families with special needs thrive in military life. Enrollment is mandatory for any active-duty service member who has a family member with special medical or educational needs – spouse, child or adult dependent. Each military service branch administers EFMP in accordance with DOD Instructions 1315.19 and 1342.22 and service-level policy.

EFMP is more than just one program or connection point, it is the work of **three components**:



**IDENTIFICATION &
ENROLLMENT**



**ASSIGNMENT
COORDINATION**



FAMILY SUPPORT

Overview of the EFMP Program – Components

EFMP **Family Support** plays a critical role in helping families with special needs with the **Identification & Enrollment** and **Assignment Coordination** processes.

EFMP Family Support

Helps families navigate, advocate and connect through:

- Information, referrals and non-clinical case management at installations
- Virtual self-service support through the EFMP & Me tool, information and resources and specialty consultations

EFMP Identification & Enrollment

Medical services work with families to coordinate:

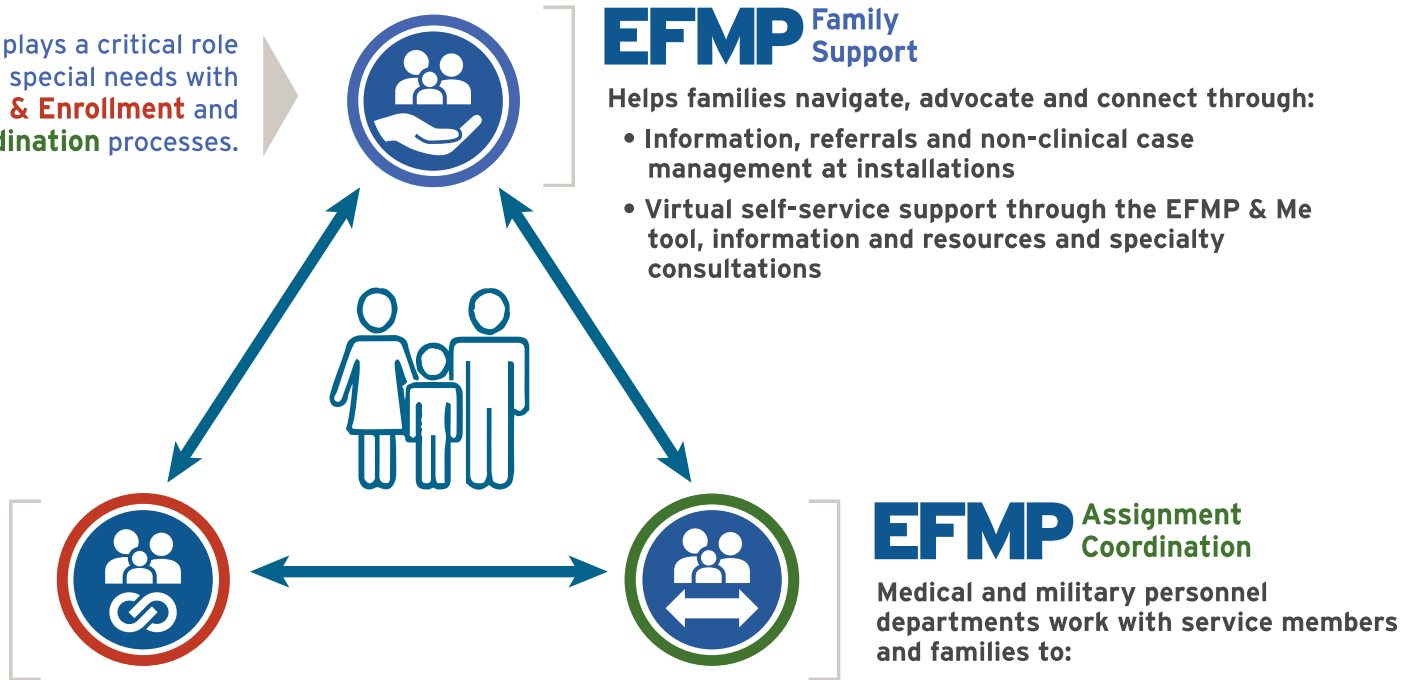
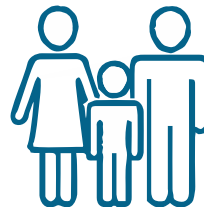
- Identification and enrollment in EFMP



EFMP Assignment Coordination

Medical and military personnel departments work with service members and families to:

- Coordinate assignments while ensuring that special medical and educational needs of family members are considered



Standardization

Improves experiences for families and creates more consistency across EFMP. Standardization-driven changes have been made in:

- Identification and enrollment
- Assignment coordination
- Family support
- Disenrollment
- Respite care



EFMP at Your Installation

Resources and Community Partners

Place holder text
Additional information or contact

Place holder text
Possible website

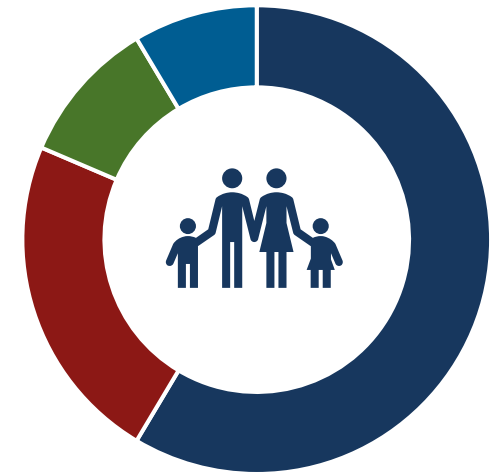
Place holder text

Place holder text

Place holder text

Demographics of Installation Population

- Place Holder
- Place Holder
- Place Holder
- Place Holder



Recent Activities and Accomplishments



Place holder text
Icons are able to change



Place holder text
Icons are able to change



Place holder text
Icons are able to change

Overview of the EFMP Program – Enrollment Snapshots



One in four adults (26%) in the U.S. have some type of special need.¹

Over 3 million children under 18 (4.3%) have a special need.²



14% of public school students ages 3-21 receive special education services.³

Approximately 8% of all DOD service members and 9% of family members across DOD are enrolled in EFMP.⁴



¹ <https://www.cdc.gov/ncbddd/disabilityandhealth/infographic-disability-impacts-all.html>

² <https://www.census.gov/library/stories/2021/03/united-states-childhood-disability-rate-up-in-2019-from-2008.html>

³ <https://nces.ed.gov/programs/coe/indicator/cgg>

⁴ EFMP enrollment percentage captured using Total Force figures from the 2021 Demographics Profile via Military OneSource (<https://www.militaryonesource.mil/data-research-and-statistics/military-community-demographics/2021-demographics-profile/>) and the most recent EFMP enrollment data submitted by the services to the EFMP Data Repository, as of FY 2023, Q1.

Why Enroll in EFMP



Ensure the medical and educational needs of the enrolled family member are considered during the assignment process.

Why Visit EFMP Family Support

EFMP Family Support providers offer support to meet each family's unique needs. Family Support providers:



Provide information and referral services to military and community resources.



Assist families in navigating medical and educational programs and resources.



Facilitate “warm handoffs” to the gaining EFMP Family Support office for families PCSing to new locations.



Provide non-clinical case management, including voluntary family needs assessments and family services plans.



Offer opportunities for families with special medical and/or educational needs.

Myth Busters

Myth

vs

Fact

EFMP enrollment is voluntary.

EFMP is a mandatory program per DoDI 1315.19, The Exceptional Family Member Program (EFMP), for active-duty service members with a family member who meets the enrollment criteria for the program.

Being enrolled in EFMP will keep me from getting promoted.

EFMP service members have reported being able to advance in their careers and meet the needs of their families with EFMP help and support. (Analysis of the Impact of Exceptional Family Member Program Enrollment on Individual Marine Career Progression and Promotion, 2016)

EFMP is just for children.

Service members are required to enroll in EFMP if they have a spouse, child or other adult dependent family member who needs ongoing medical or educational services.

Families can be identified and enrolled during the assignment process only.

Families can be identified for enrollment a variety of ways, including EFMP Family Support providers, medical providers, educational staff, word of mouth and self-identification. DD forms 2792 and 2792-1 are used for both enrollment and screening; completion of these forms does not result in automatic enrollment.

Myth Busters (continued)

Myth vs Fact

EFMP “keeps families from going where they want to go.”

EFMP makes every effort to help keep families together and support the service member's career. The final decision for deployment or duty station selection will always be based on mission need.

Families can receive support from their own service only.

EFMP supports all families with special medical and/or education needs across the DOD. Any family regardless of location and service affiliation can access EFMP Family Support services.

Once you're enrolled in EFMP, you don't need to update the enrollment paperwork, DD Forms 2792 and 2792-1.

Pursuant to DoDI 1315.19, the EFMP enrollment of family member(s) with special needs requires an update when conditions occur, change or no longer exist, and when service-specific policy requires.

Disenrollment is automatic.

The service member must initiate the request for disenrollment with their local EFMP medical office.

Standard Resources for Family Support

Military families, leaders and EFMP Family Support providers have access to the following resources:

- DD3054 Family Needs Assessment and Family Services Plan
- EFMP & Me
- Office of Special Needs EFMP podcast series
- Military OneSource Special Needs Consultants
- The Exceptional Advocate
- Education Directory for Children with Special Needs
- DOD Special Needs Parent Toolkit: Birth to 18
- Guide for Adults with Special Needs
- MilLife Learning e-learning courses

MILITARY
ON  SOURCE

Command Responsibilities and Outcomes

Responsibilities

- Communicate information about EFMP, such as mandatory enrollment and program updates.
- Promote EFMP through positive messaging and dissemination of available information.
- Ensure service members fulfill their responsibilities as an EFMP enrollee.

Outcomes

- Assignment Coordination ensures family members' medical and/or educational needs are considered during a PCS.
- Timely identification of special needs and enrollment into the program can reduce interpersonal and unit crises.
- EFMP Family Support services contribute to quality of life and family and mission readiness.